

Newsletter

9th February 2023

Spring Term



St Paul's Cray

C of E Primary School

Act Justly, Love Mercy, Walk Humbly

Dropping off and collecting children from school

When dropping off or collecting your child from school please remember to park with respect for our neighbours.

DO NOT park over driveways

DO NOT park over yellow lines or zigzags

DO NOT block the school gates – if we had to have an emergency vehicle attend school this would be an issue – gates should be kept clear at ALL times.

We regularly have the Bromley parking enforcement out so parking incorrectly is likely to cost you a fine.



Parents' Evening

As you may be aware parents' evening will take place on Wednesday 22nd February, letters have been sent home to classes involved, please remember children in Reception will be dismissed at 2.20pm on this day, children in year 1 to year 6 will be dismissed at 2.30pm on the day

Phase Leaders

Should you have any queries or questions regarding your child in school you can speak to the class teacher or our phase leaders:

Early Years - Mrs Zegeling

KS1- Miss Bell

Lower KS2 - Mrs Jones

Upper KS2- Mrs Merredew

New Menu

Our catering suppliers Edwards and Ward are introducing a new menu for after half term, this will be emailed out and available on our website, please do have a look.



Speech and Language

Is your child using age appropriate language? Are you worried that your child's use of language could be delayed? Do you think your child is using above average language?

You can check here using this document which tells you what language your child should be using for their age. It also helps to see what they should be able to do next as well. Please see Mrs Zegeling if you would like to see a paper copy of this.

For children birth to 5:

https://speechandlanguage.org.uk/media/3224/tct_univ_speak_0-5_update.pdf

For children aged 5-11 years:

https://speechandlanguage.org.uk/media/3225/tct_univ_speak_5-11_update.pdf

Contact Numbers

Please ensure the School Office have more than one contact on record for your child. In the case of an emergency it is important that we have more than one number and that all numbers are up to date.

B-Hive

Please see below details of really useful therapy advice, support and services for children, teenagers and young adults in Bromley.

<https://bromleytherapyhub.org.uk/>



Family Worker

If you have concerns or worries about your child, you can contact Mrs Brindle who is our Family worker.

Call 01689 821993

Still Face Experiment

Often parents do not see the importance of interacting with very young children - this clip shows how important healthy interactions and attachment are even when children are very young.

<https://www.youtube.com/watch?v=leHcsFqK7So>

Nursery News

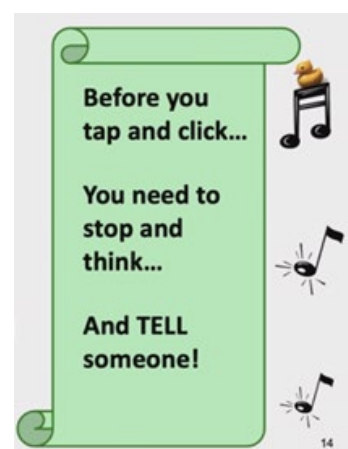
We celebrated Chinese New Year last week. We tasted noodles and rice and we performed a Chinese lion dance. We made lucky money envelopes and tried to use tweezers and chopsticks to pick things up. We also made The Great Wall of China with our bricks around the nursery.



Reception News

Robins Class have enjoyed Internet Safety Day. We were learning about how to keep safe when we use different technology.

We enjoyed programming with the Beebots and using apps on the Ipad. We learnt a song from Smartie the Penguin on how to keep safe when we are using our tablets at home or in school.



Darcey proudly showed us her jumper that she had bought with her attendance voucher.

Year 1 News

Year 1 have been using Diens to partition numbers in to tens and ones. We then added 2 two digit numbers together using the Diens.



We also enjoyed dressing up for NSPCC Number Day



Olivia has made an online safety poster for class discussion.



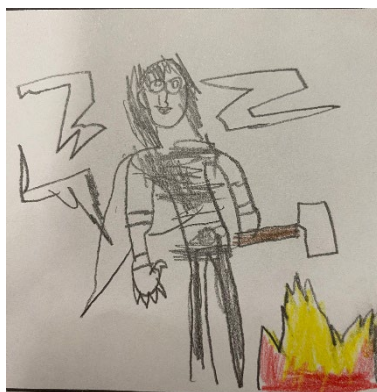
Year 2 News

Puffins class have been using recycled materials to make a city landscape in Art. What can you see?



Year 4 News

Year 4 have been learning about Vikings and Teddy has done this lovely drawing as part of his work.



Some of our year 4 children took part in a local schools Lacrosse Competition on Thursday 9th February; they played well and everyone commented on how smart they looked in their sports bibs.

Year 5 News

Year 5 were given the learning objective: To use emotive language to write a soliloquy. Here are some examples of what they wrote:

My mother, how could she!
my father has been dead 2 months I say 2 MONTHS!!!
but yet she has betrayed me. Frustration! Anger!
Hath filled my soul!! The crown has been taken and given to this stupid old man MY UNCLE!!!
When will life be fair again?..... Written by Katie

Year 3 News

Year 3 have been enjoying reading for pleasure by sharing books with friends.



I am betrayed, sad and angry because of my evil uncle. I despise him to the day of his death. I should be the one the chosen King of Denmark not this disgusting, mad man. My worries all locked up inside as I have lost everything important in my life. My crown , my mum, my dad and all my dreams. Claudius, as evil as, a snake killed my dad with poison in his ear. Now is time to get revenge on my evil uncle!

Written by Seweryn

Year 6 News

This half term, Y6 have been learning about the Slave Trade and we started our topic looking at the different countries in Africa.

Children chose which country they wanted to research and produced PowerPoints about them. We researched the culture, languages spoken and the different religions of our chosen countries.

Here are some examples of their work.

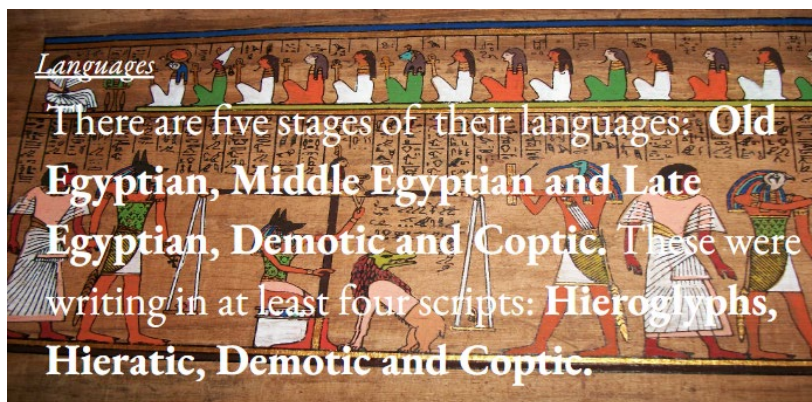
TRADITIONS

Along with many common holidays we celebrate in the states, Mali celebrates Islamic holidays such as **the End of Ramadan, the Feast of the Sacrifice, and the Birth of Muhammed the Prophet** . Approximately 85 to 95 percent of Malians are Muslim, so these holidays are celebrated with traditions across the country.



How did they build the pyramids

The most plausible one is that the Egyptians employed a sloping and encircling embankment of brick, earth, and sand, which was increased in height and length as the pyramid rose; stone blocks were hauled up the ramp by means of sledges, rollers, and levers.



Achievements

Axum was one of first African empires to issue their their own coins made of gold, silver and copper. The people of Axum developed many architectural advancements such as palaces atop platforms. Also, stone towers were developed to mark graves and represent an elegant palace. Axum also developed a unique system of writing.



PE Timetable Spring Term 2 - 2023

	9.00- 10.00	10.00- 11.30	1-1.40 HALL	1.40-2.20 KS1 PLAYGROUND	2.20-3pm KS2 PLAYGROUND FIELD
Monday			Reception (Cricket)		
Tuesday			Year 1/2 (Basketball coach)	Year 6	
Wednesday	Nursery Sport for Tots Hall		Year 1	Year 3	
Thursday				Year 4 Lacrosse	Year 4 (Swimming)
Friday			Year 5 (Gymnastic coach)		

Compulsory P.E. Kit (boys and girls):

Children are to wear PE kit on their PE days all day. This should consist of:

trainers or plimsolls,

plain black joggers/plain black leggings or plain black shorts,

plain white t-shirt,

plain black hoodie or school jumper

Children who are not in correct PE kit will be expected to change into the school's spare kit for the day.

School Attendance

At St Paul's Cray we take attendance and punctuality very seriously we have a whole school attendance target of 96%, our whole school attendance currently stands at 91.38%

Breakdown of current class attendance for the year so far is:

Robins – 90.41%

Kingfishers – 90.37%

Puffins – 93.05%

Maples – 93.56%

Rowans – 88.38%

Elms – 88.88%

Ash – 92.54%

Oaks – 91.87%

There are things you can do to improve your child's attendance and avoid falling into the persistent absence category:

- Avoid taking any holidays during term times
- Keep up to date with what % attendance your child has so that you know if they are at risk of persistent absence (you can access attendance on the school app)
- Speak to school staff with any concerns. We have our family worker, Mrs Brindle and each Key Stage has a Phase Leader.
 - EYFS (Nursery and Reception) is Mrs Zegeling
 - KS1 (Year 1 and 2) is Miss Bell
 - LKS2 (Year 3 and 4) is Mrs Jones
 - UKS2 (Year 5 and 6) is Mrs Merredew
- Talk to your child about the importance of them being in school and let them know how important you feel it is.

If your child is unwell and you are unsure whether to send them to school, contact the office to report on 01689 821993. School will phone the parents of any children who are absent without reason.



Important Events

Wednesday 22 nd February	PM	Parents evening for Reception to year 6 – early closure: 2.20pm for Reception 2.30pm for Years 1 to 6
Wednesday 1 st March	2.50pm	Year 1/2 Puffins Class Assembly – parents/carers invited
Friday 3 rd March	All day	World Book Day – please note this has changed from the Thursday to the Friday
Wednesday 8 th March	2.50pm	Year 1 Kingfishers Class Assembly – parents/carers invited
Wednesday 8 th March	All day	International Women’s Day
Monday 13 th March – Friday 17 th March	All day	Science Week
Wednesday 15 th March	2.50pm	Reception Class Assembly – parents/carers invited
Friday 31 st March	Services start at: 9.30am 10.15am 11am	Easter Services at St Mary’s Church parents/carers welcome to attend Year 1 and 2 Year 3 and 4 Year 5 and 6
Friday 31 st March	11.45am 1.20pm 1.30pm	Early close 11.45 – Nursery no PM session or lunch Early close – Reception Early close – Years 1 to 6
Monday 17 th April		Return to school from Easter break
Thursday 1 st June		GRT History Month
Monday 5 th June	All day	World Environment Day
Tuesday 20 th June	All day	World Refugee Day
Thursday 29 th June	10am-12.30pm	Nursery Sports Event and picnic
Friday 30 th June		Sports Day – further details to follow
Wednesday 12 th July	All day	French Day

SCHOOL TERM AND HOLIDAY DATES

2023 - 2024

AUTUMN TERM - 2023

Autumn 1 – Wed 30th Aug – Fri 13th Oct

Half Term – Mon 16th Oct – Fri 27th Oct

Autumn 2 – Mon 30th Oct – Weds 20th Dec

SPRING TERM 2024

Spring 1 – Weds 5th Jan – Thurs 8th February

Half Term – Mon 12th Feb – Fri 16th Feb

Spring 2 – Mon 19th Feb – Fri 28th Mar

SUMMER TERM 2024

Summer 1 - Mon 15th Apr – Thurs 23rd May

Bank Holiday – Mon 6th May

Half Term – Mon 27th May – Fri 31st May

Summer 2 – Mon 3rd June – Tues 23rd July

STAFF TRAINING DAYS (school closed)

Day 1 – Tuesday 29 August 2023

Day 2 – Thursday 21 December 2023

Day 3 – Friday 9th February 2024

Day 4 – Friday 24th May 2024

Day 5 – Wednesday 24th July 2024

AMADEUS PRIMARY ACADEMY TRUST
St Paul's Cray CE Primary School
Buttermere Road, St Paul's Cray, Orpington BR5 3WD
01689 821993
admin@st-pauls-cray.bromley.sch.uk

